

# State Epidemiological Outcomes Workgroup

Email: adadeehi@gmail.com

Phone: (808) 956-6059

Fax: (808) 956-5818

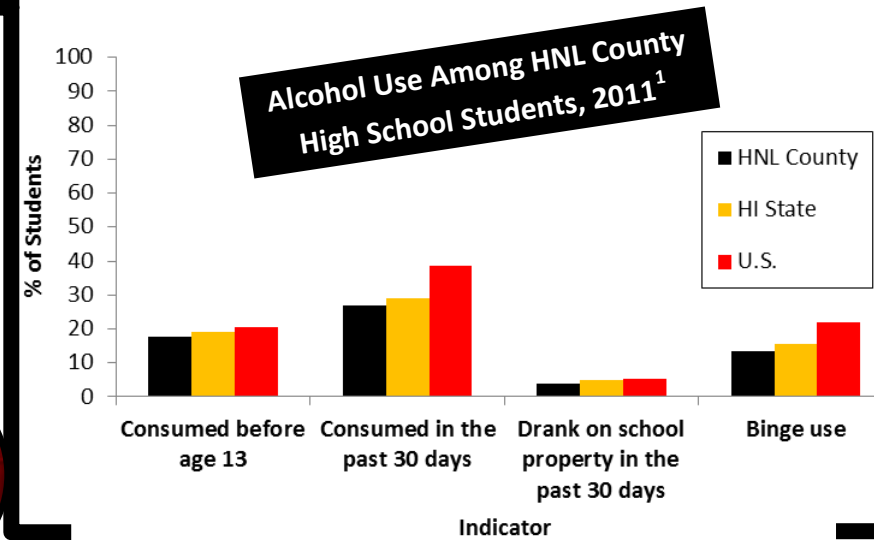
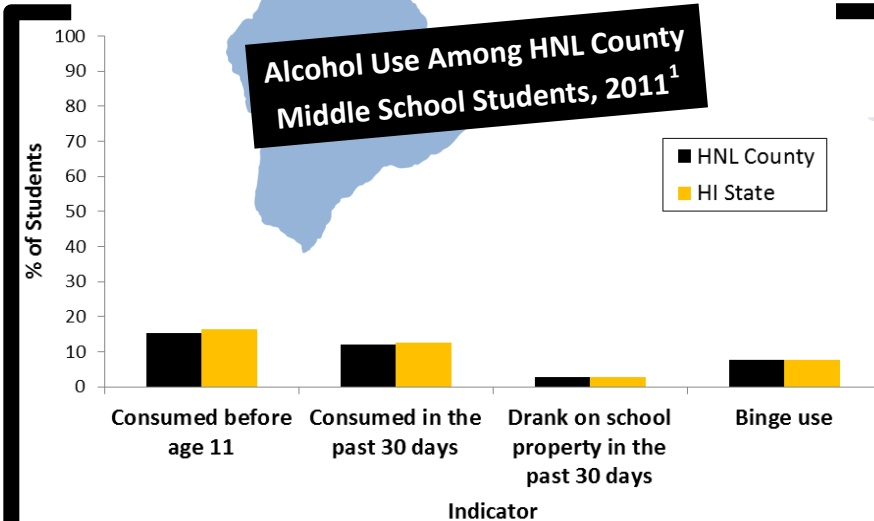
## HONOLULU COUNTY YOUTH ALCOHOL

### DID YOU KNOW?

Youth alcohol use has long-term adverse effects on normal brain development.

Underage drinking affects academic performance. According to the 2009 YRBSS, 1 million high school students binged at least 5 times per month, and were 3 times more likely to report earning D's and F's on their report card.

Early onset alcohol use is associated with alcohol problems later in life. 40% of people who reported drinking before age 13 were classified with alcohol dependence at some point in their life. Similarly, children with parents who binge are twice as likely to binge themselves.<sup>4</sup>



### KNOW THE LAW!

#### Hawaii's Zero Tolerance Law

Any minor found to possess, consume, or purchase alcohol, or caught driving a vehicle with a measurable blood alcohol concentration (BAC) level could have their driver's license revoked for a minimum of 6 months.<sup>2-3</sup>

#### Social Host Liability Law/ Host Party Law

This law is intended to hold adults accountable for youth alcohol use, regardless of who furnishes the alcohol.<sup>3</sup>

### ALCOHOL KILLS!

74% of all traffic fatalities (n=15) in Hawaii in 2011 involved 15 to 20 year old drivers with BAC > 0.01. In 2011, 12 deaths were attributed to alcohol among Hawaii adolescents (under 21). In 2010, there were 141 minors found in possession (MIP) by State law enforcement agencies.<sup>4</sup>



References:

<sup>1</sup> Hawaii Health Data Warehouse, State of Hawaii, Hawaii School Health Survey: Youth Risk Behavior Survey Module. (Alcohol Consumption by School Type and Indicator, by State and County, by Gender, Grade Level, and DOH Race-Ethnicity, for the Year 2011).

<sup>2</sup> Hawaii Revised Statute § 291E-64. Online.

<sup>3</sup> Hawaii Revised Statutes § 281-101.5. Online.

<sup>4</sup> U.S. Department of Health and Human Services, Substance Abuse and Mental Health Services Administration. (2012). Report to congress on the prevention and reduction of underage drinking.

# State Epidemiological Outcomes Workgroup

Email: adadeehi@gmail.com

Phone: (808) 956-6059

Fax: (808) 956-5818

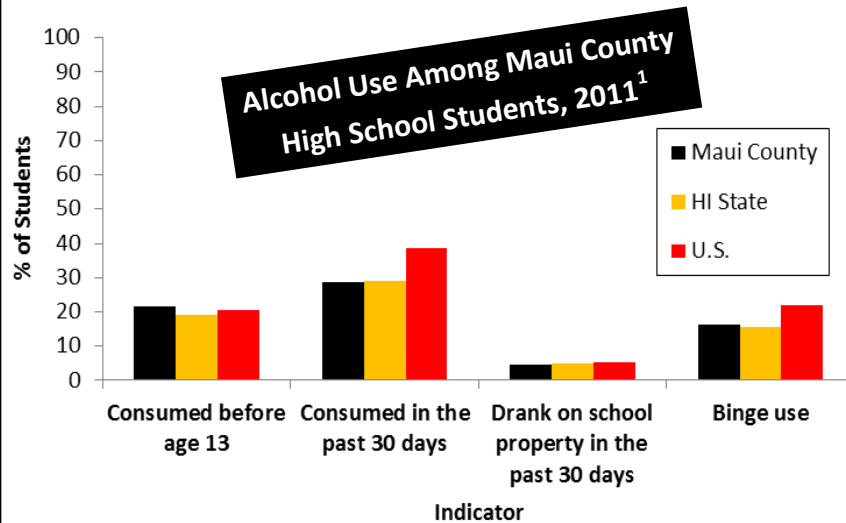
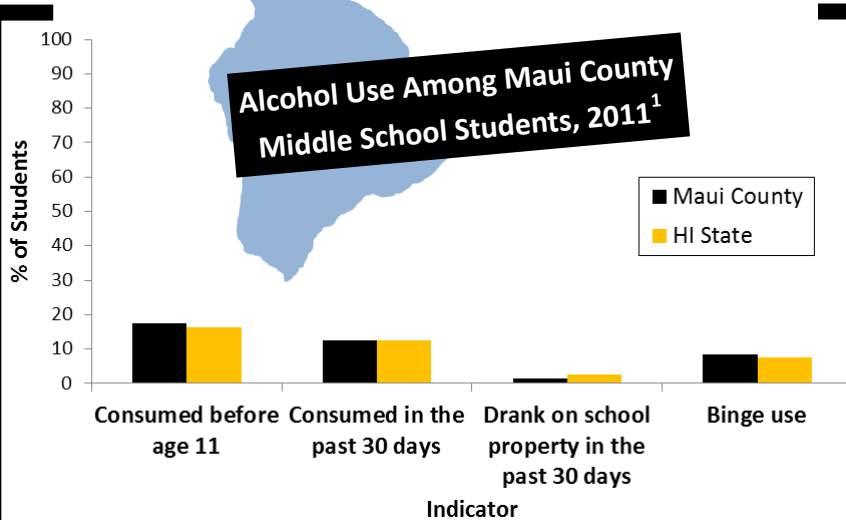
## MAUI COUNTY YOUTH ALCOHOL

### DID YOU KNOW?

Youth alcohol use has long-term adverse effects on normal brain development.

Underage drinking affects academic performance. According to the 2009 YRBSS, 1 million high school students binged at least 5 times per month, and were 3 times more likely to report earning D's and F's on their report card.

Early onset alcohol use is associated with alcohol problems later in life. 40% of people who reported drinking before age 13 were classified with alcohol dependence at some point in their life. Similarly, children with parents who binge are twice as likely to binge themselves.<sup>4</sup>



### KNOW THE LAW!

#### Hawaii's Zero Tolerance Law

Any minor found to possess, consume, or purchase alcohol, or caught driving a vehicle with a measurable blood alcohol concentration (BAC) level could have their driver's license revoked for a minimum of 6 months.<sup>2-3</sup>

#### Social Host Liability Law/ Host Party Law

This law is intended to hold adults accountable for youth alcohol use, regardless of who furnishes the alcohol.<sup>3</sup>

### ALCOHOL KILLS!

74% of all traffic fatalities (n=15) in Hawaii in 2011 involved 15 to 20 year old drivers with BAC > 0.01. In 2011, 12 deaths were attributed to alcohol among Hawaii adolescents (under 21). In 2010, there were 141 minors found in possession (MIP) by State law enforcement agencies.<sup>4</sup>



References:

<sup>1</sup> Hawaii Health Data Warehouse, State of Hawaii, Hawaii School Health Survey: Youth Risk Behavior Survey Module. (Alcohol Consumption by School Type and Indicator, by State and County, by Gender, Grade Level, and DOH Race-Ethnicity, for the Year 2011).

<sup>2</sup> Hawaii Revised Statute § 291E-64. Online.

<sup>3</sup> Hawaii Revised Statutes § 281-101.5. Online.

<sup>4</sup> U.S. Department of Health and Human Services, Substance Abuse and Mental Health Services Administration. (2012). Report to congress on the prevention and reduction of underage drinking.

# State Epidemiological Outcomes Workgroup

Email: adadeehi@gmail.com

Phone: (808) 956-6059

Fax: (808) 956-5818

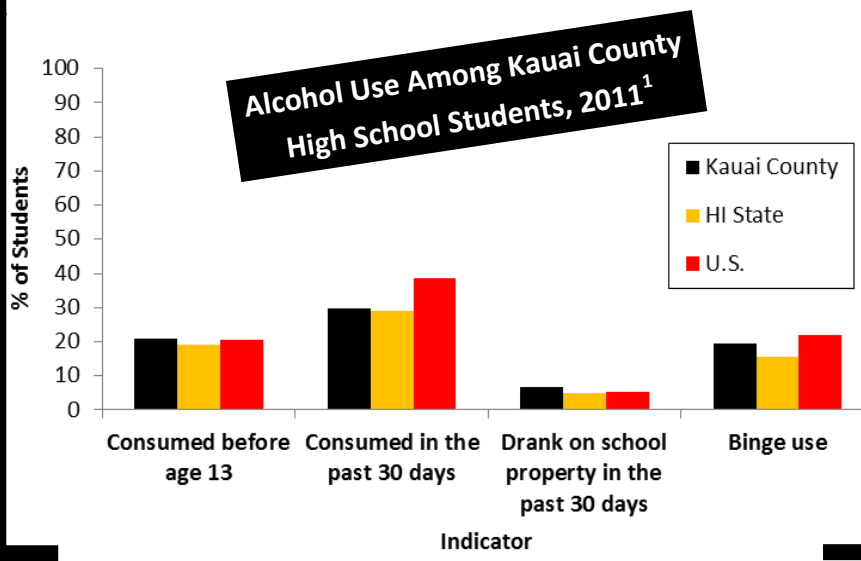
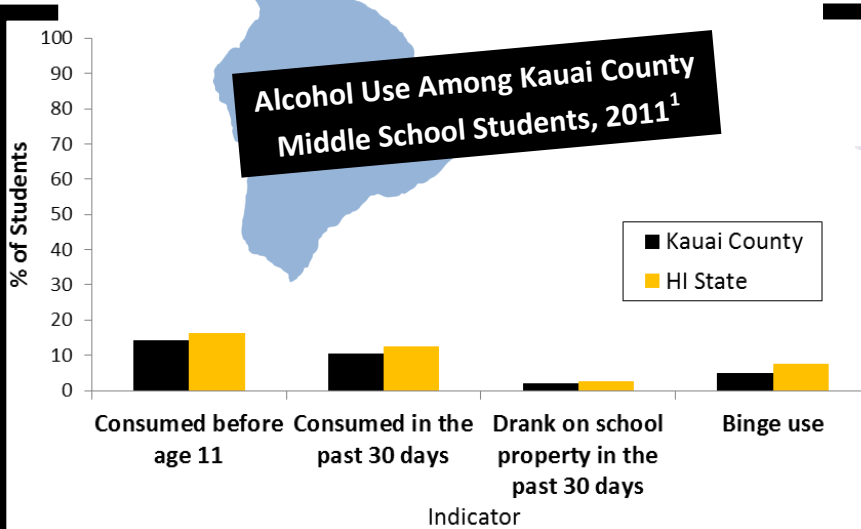
## KAUAI COUNTY YOUTH ALCOHOL

### DID YOU KNOW?

Youth alcohol use has long-term adverse effects on normal brain development.

Underage drinking affects academic performance. According to the 2009 YRBSS, 1 million high school students binged at least 5 times per month, and were 3 times more likely to report earning D's and F's on their report card.

Early onset alcohol use is associated with alcohol problems later in life. 40% of people who reported drinking before age 13 were classified with alcohol dependence at some point in their life. Similarly, children with parents who binge are twice as likely to binge themselves.<sup>4</sup>



### KNOW THE LAW!

#### Hawaii's Zero Tolerance Law

Any minor found to possess, consume, or purchase alcohol, or caught driving a vehicle with a measurable blood alcohol concentration (BAC) level could have their driver's license revoked for a minimum of 6 months.<sup>2-3</sup>

#### Social Host Liability Law/ Host Party Law

This law is intended to hold adults accountable for youth alcohol use, regardless of who furnishes the alcohol.<sup>3</sup>

### ALCOHOL KILLS!

74% of all traffic fatalities in Hawaii in 2011 involved 15 to 20 year old drivers with BAC > 0.01. In 2011, 12 deaths were attributed to alcohol among Hawaii adolescents (under 21). In 2010, there were 141 minors found in possession (MIP) by State law enforcement agencies.<sup>4</sup>



References:

- <sup>1</sup> Hawaii Health Data Warehouse, State of Hawaii, Hawaii School Health Survey: Youth Risk Behavior Survey Module. (Alcohol Consumption by School Type and Indicator, by State and County, by Gender, Grade Level, and DOH Race-Ethnicity, for the Year 2011).
- <sup>2</sup> Hawaii Revised Statute § 291E-64. Online.
- <sup>3</sup> Hawaii Revised Statutes § 281-101.5. Online.
- <sup>4</sup> U.S. Department of Health and Human Services, Substance Abuse and Mental Health Services Administration. (2012). Report to congress on the prevention and reduction of underage drinking.

# State Epidemiological Outcomes Workgroup

Email: adadeehi@gmail.com

Phone: (808) 956-6059

Fax: (808) 956-5818

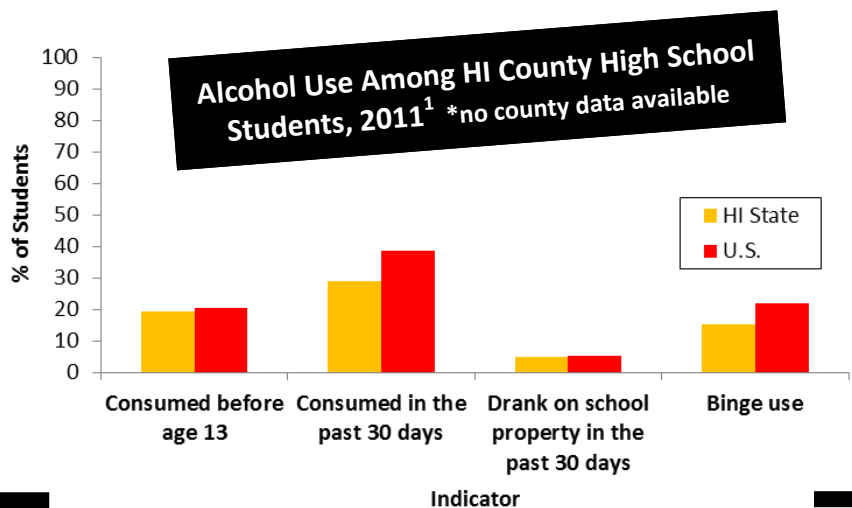
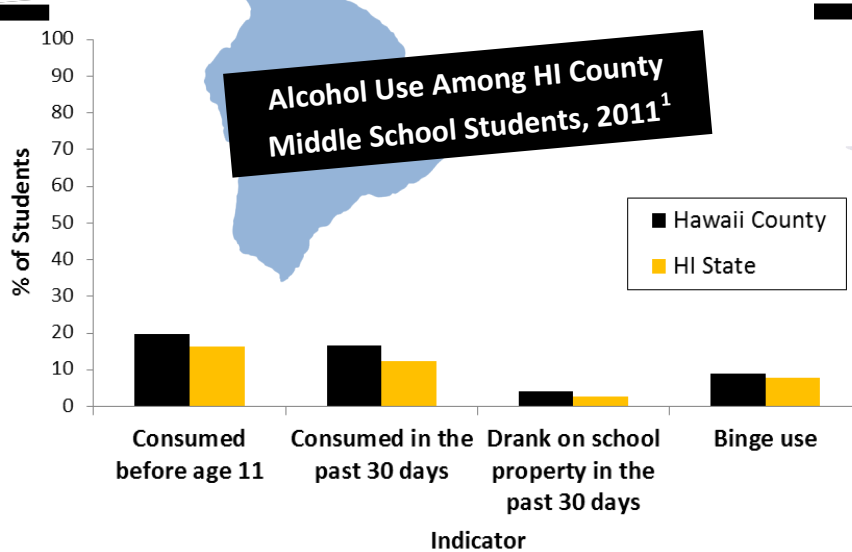
## HAWAII COUNTY YOUTH ALCOHOL

### DID YOU KNOW?

Youth alcohol use has long-term adverse effects on normal brain development.

Underage drinking affects academic performance. According to the 2009 YRBSS, 1 million high school students binged at least 5 times per month, and were 3 times more likely to report earning D's and F's on their report card.

Early onset alcohol use is associated with alcohol problems later in life. 40% of people who reported drinking before age 13 were classified with alcohol dependence at some point in their life. Similarly, children with parents who binge are twice as likely to binge themselves.<sup>4</sup>



### KNOW THE LAW!

**Hawaii's Zero Tolerance Law**  
Any minor found to possess, consume, or purchase alcohol, or caught driving a vehicle with a measurable blood alcohol concentration (BAC) level could have their driver's license revoked for a minimum of 6 months.<sup>2-3</sup>

**Social Host Liability Law/ Host Party Law**  
This law is intended to hold adults accountable for youth alcohol use, regardless of who furnishes the alcohol.<sup>3</sup>

### ALCOHOL KILLS!

74% of all traffic fatalities in Hawaii in 2011 involved 15 to 20 year old drivers with BAC > 0.01. In 2011, 12 deaths were attributed to alcohol among Hawaii adolescents (under 21). In 2010, there were 141 minors found in possession (MIP) by State law enforcement agencies.<sup>4</sup>



References:  
<sup>1</sup> Hawaii Health Data Warehouse, State of Hawaii, Hawaii School Health Survey: Youth Risk Behavior Survey Module. (Alcohol Consumption by School Type and Indicator, by State and County, by Gender, Grade Level, and DOH Race-Ethnicity, for the Year 2011).  
<sup>2</sup> Hawaii Revised Statute § 291E-64. Online.  
<sup>3</sup> Hawaii Revised Statutes § 281-101.5. Online.  
<sup>4</sup> U.S. Department of Health and Human Services, Substance Abuse and Mental Health Services Administration. (2012). Report to congress on the prevention and reduction of underage drinking.

**MIDDLE SCHOOL- 2011**

	Honolulu County		Maui County		Kauai County		Hawaii County		HI State		United States	
	%	(95% CI)	%	(95% CI)	%	(95% CI)	%	(95% CI)	%	(95% CI)	%	(95% CI)
Consumed before age 11	15.4	(12.6-18.2)	17.6	(15.0-20.2)	14.2	(11.7-16.7)	19.8	(16.7-22.8)	16.3	(14.4-18.1)	N/A	N/A
Consumed in the past 30 days	11.9	(8.8-15.1)	12.6	(9.8-15.4)	10.5	(8.0-13.1)	16.5	(13.4-19.6)	12.5	(10.4-14.5)	N/A	N/A
Drank on school property in the past 30 days	2.6	N/A	1.4	N/A	2.2	N/A	4.1	N/A	2.6	N/A	N/A	N/A
Binge use	7.7	(4.6-10.8)	8.4	(6.0-10.7)	5.1	(3.6-6.7)	8.9	(6.8-11.1)	7.7	(5.7-9.8)	N/A	N/A

**HIGH SCHOOL- 2011**

	Honolulu County		Maui County		Kauai County		Hawaii County		HI State		United States	
	%	(95% CI)	%	(95% CI)	%	(95% CI)	%	(95% CI)	%	(95% CI)	%	(95% CI)
Consumed before age 13	17.5	(15.9-19.0)	21.6	(18.4-24.7)	20.9	(17.0-24.8)	N/A	N/A	19.2	(18.0-20.6)	20.5	(19.2-21.8)
Consumed in the past 30 days	26.8	(21.9-31.7)	28.7	(25.3-32.2)	29.7	(25.3-34.0)	N/A	N/A	29.1	(25.9-32.4)	38.7	(37.2-40.3)
Drank of school property in the past 30 days	3.7	N/A	4.7	N/A	6.6	N/A	N/A	N/A	5	(4.3-5.9)	5.1	(4.5-5.8)
Binge use	13.4	(10.8- 15.9)	16.4	(13.9- 19.0)	19.3	(15.6- 23.0)	N/A	N/A	15.4	(13.7-17.2)	21.9	(21.0-22.8)